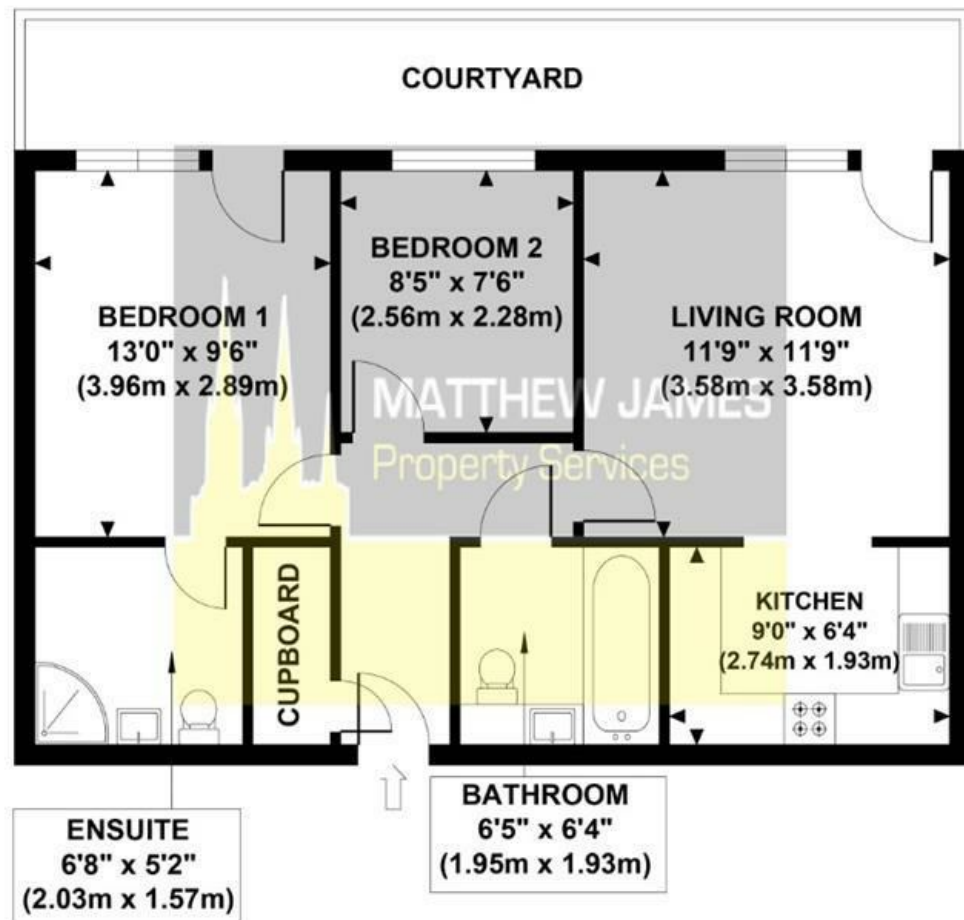


MANDARA POINT

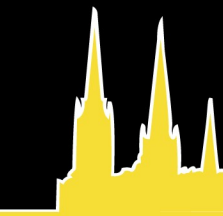
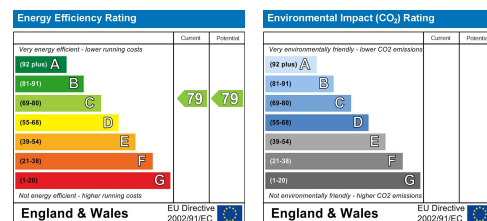
Approximate Gross Internal Area
540 sq ft / 50.20 sq m



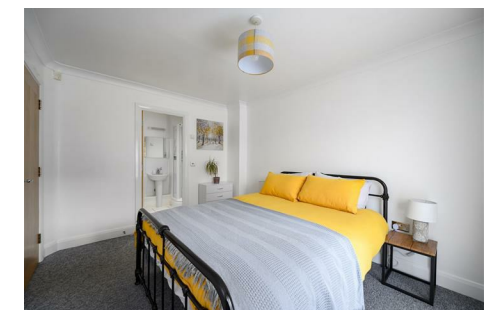
**GROSS INTERNAL
FLOOR AREA 540 SQ FT**

Although every attempt has been made to ensure accuracy, all measurements are approximate and no responsibility is taken for any error, omission, or mid-statement. This floor plan is for illustrative purposes only and not to scale. Measured in accordance to RICS standards.

These particulars, whilst believed to be accurate are set out as a general outline only for guidance and do not constitute any part of an offer or contract. Intending purchasers should not rely on them as statements of representation of fact, but must satisfy themselves by inspection or otherwise as to their accuracy. No person in this firm's employment has the authority to make or give any representation or warranty in respect of the property.



MATTHEW JAMES
Property Services



15 Mandara point, Drapers Fields , Coventry CV1 4AF

TWO BEDROOMS... GROUND FLOOR... OPEN PLAN LIVING... COURTYARD PATIO... VACANT... NO UPWARD CHAIN... PERFECT INVESTMENT PROPERTY OR FOR THE FIRST TIME BUYER... Are you looking for your next investment property, looking to downsize or looking for your first property? This beautifully decorated ground floor apartment comes with a long lease, allocated secure parking and is VACANT with NO UPWARD CHAIN. Located near to Coventry City Centre its perfect for those that work close by or the investment buyer looking for their next property to add to their portfolio. Briefly comprising of secure gated parking, secure access into the building, entrance hallway with storage cupboard, open plan living room and kitchen, family bathroom with shower over the bath, two bedrooms with master ensuite, allocated parking and a courtyard patio accessed from the living area and the master bedroom. Call us now to book your immediate viewing.

Offers Over £158,000

CONTACT INFORMATION

24a Warwick Row, Coventry CV1 1EY
02477 170170

info@matthewjames.uk.com
www.matthewjames.uk.com

Facebook
Twitter

15 Mandara point, Drapers Fields

, Coventry CV1 4AF



- TWO BEDROOMS
- IMMACULATE THROUGHOUT
- REDECORATED FOR SALE
- IMMACULATELY FURNISHED
- GROUND FLOOR
- LONG LEASE
- PERFECT INVESTMENT PROPERTY
- SECURE PARKING
- CLOSE TO CITY CENTRE
- GREAT FOR FIRST TIME BUYER

Communal Areas

Entrance Hallway

Bedroom One

13' x 9'6 (3.96m x 2.90m)

Bedroom One En-Suite

6'8 x 5'2 (2.03m x 1.57m)

Bedroom Two

8'5 x 7'6 (2.57m x 2.29m)

Family Bathroom

6'5 x 6'4 (1.96m x 1.93m)

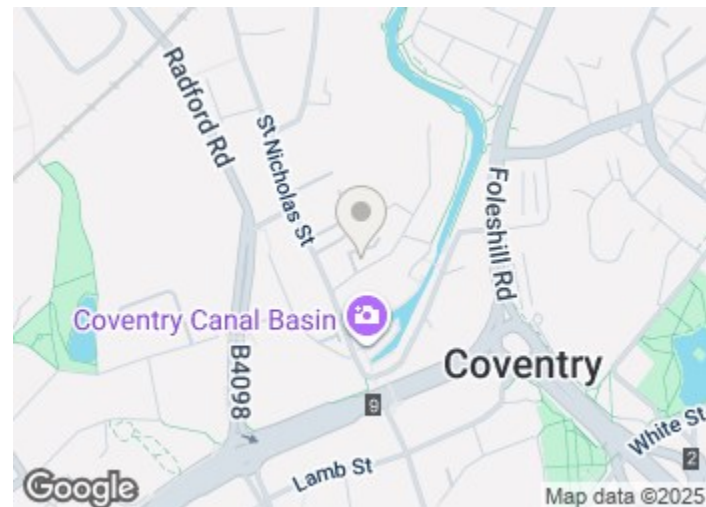
Living Room

11'9 x 11'9 (3.58m x 3.58m)

Kitchen

9' x 6'4 (2.74m x 1.93m)

Patio Courtyard



Directions

